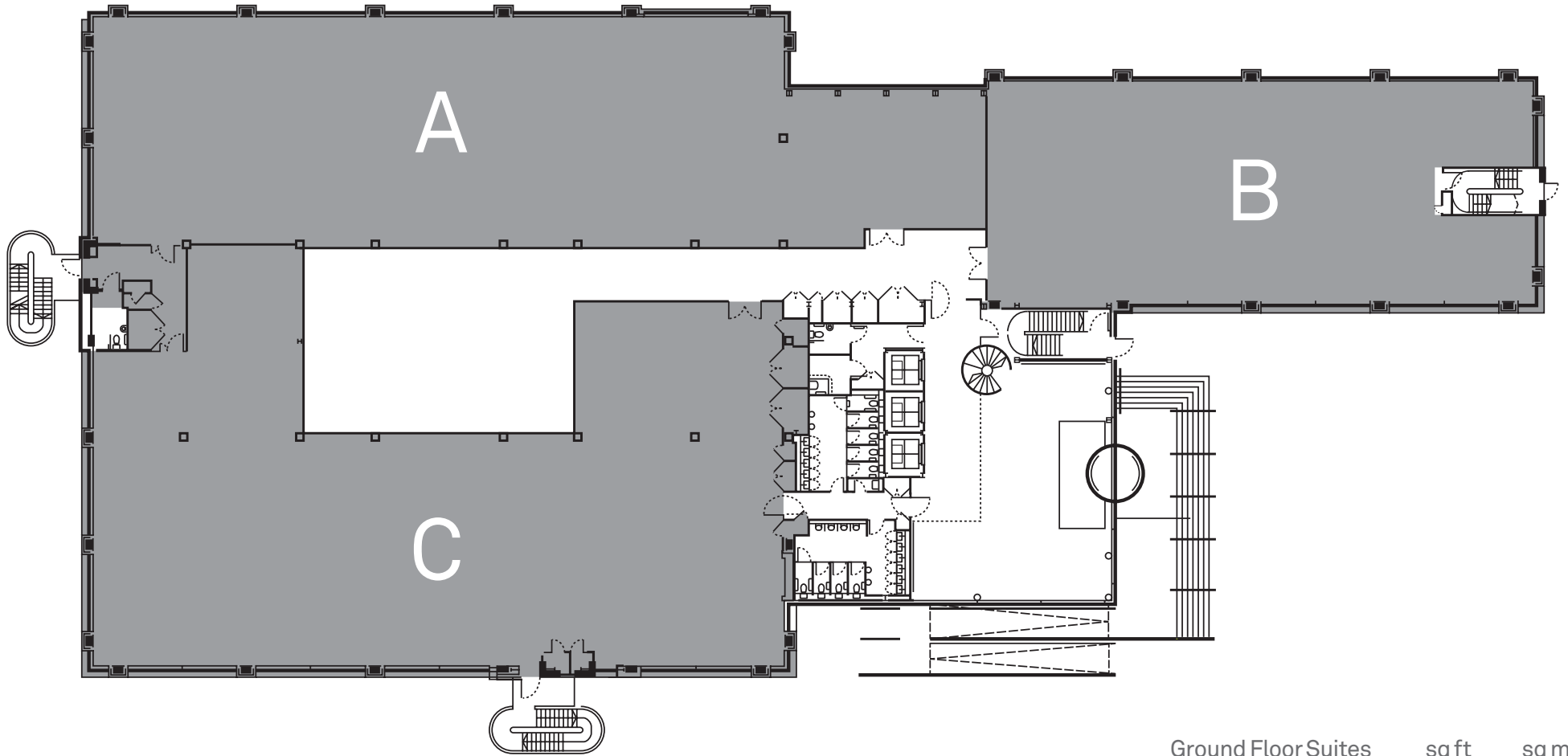
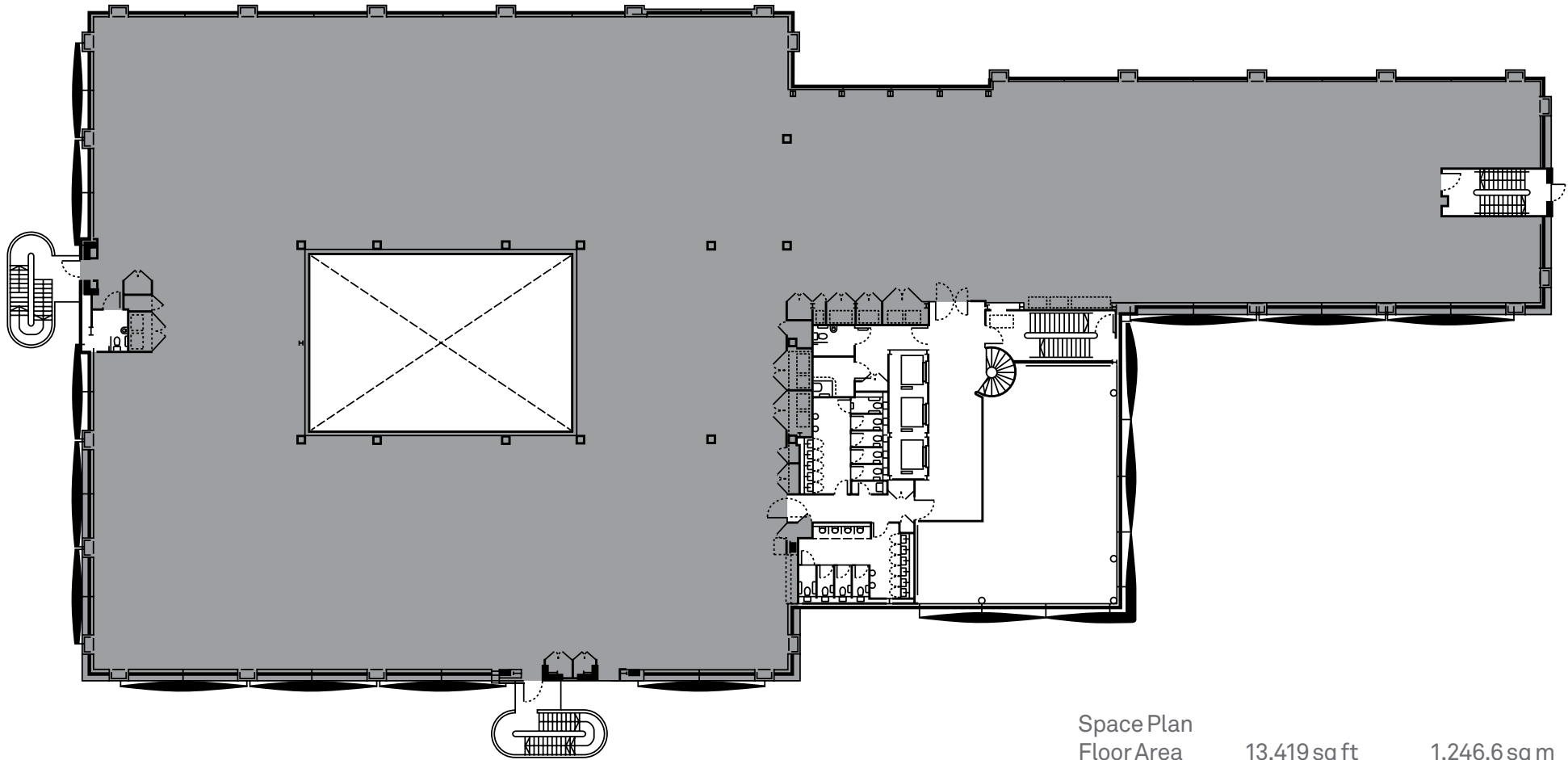


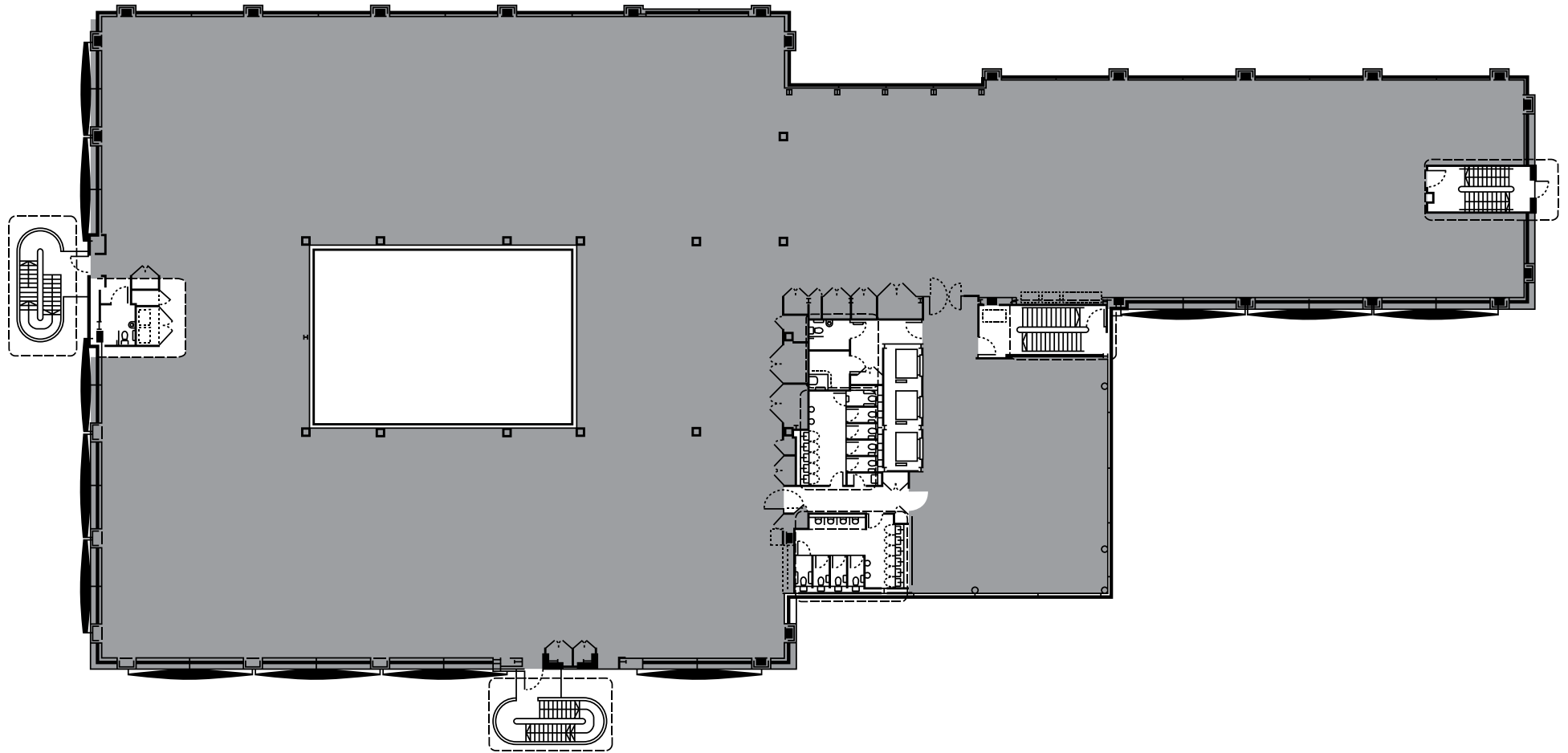
Floor Area	NIA sq ft	sq m	IPMS 3 sq ft	sq m
Offices	20,296	1,885.5	20,736	1,926.4
Reception	1,556	144.6		
Total Area	68,065	6,323.5	69,756	6,480.5



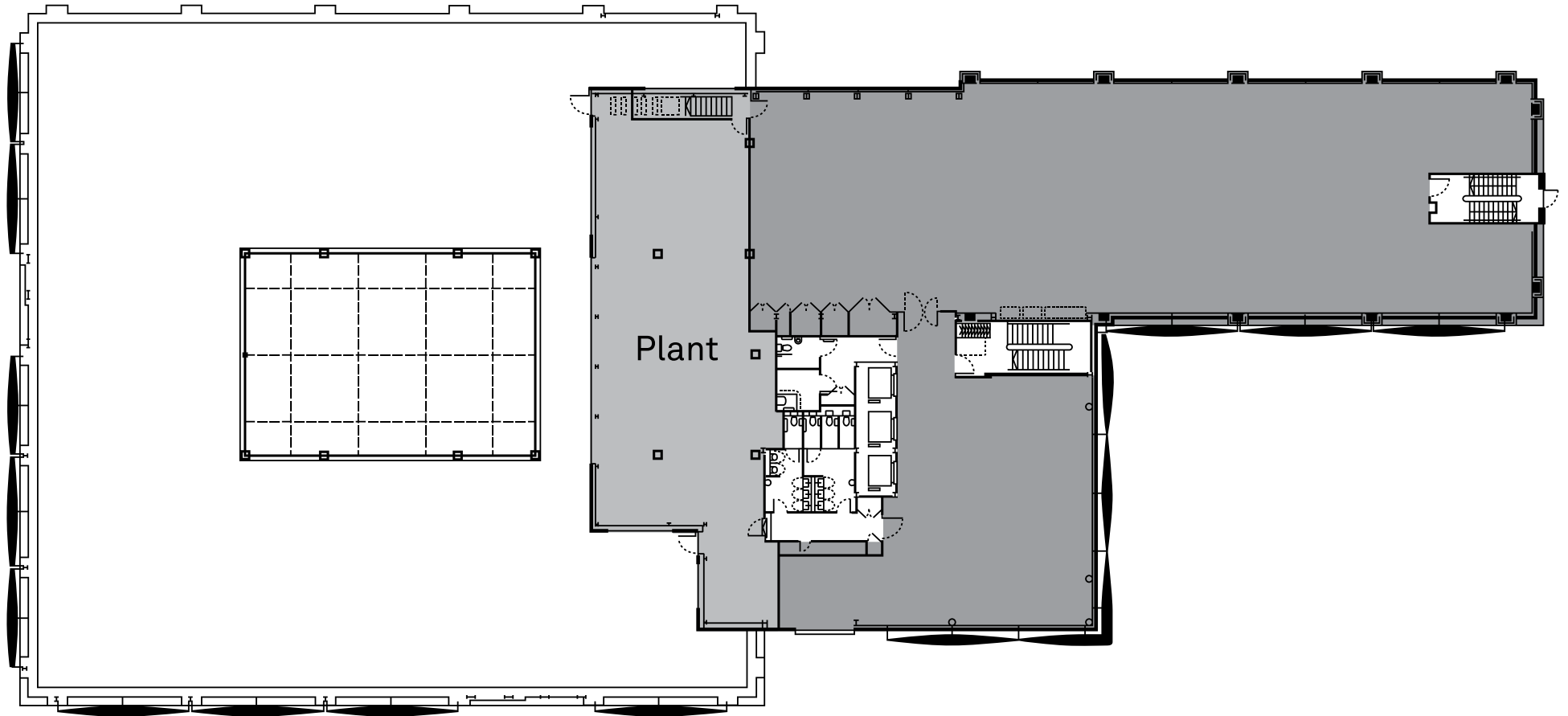
Ground Floor Suites	sq ft	sq m
A	6,300	585
B	4,000	371
C	7,300	678



Space Plan	Floor Area		IPMS 3	
	NIA	sq m	sq ft	sq m
Floor Area	13,419 sq ft	1,246.6 sq m		
First Floor	18,703	1,737.6	19,139	1,778.1
Total floor Area	68,065	6,323.5	69,756	6,480.5



Floor Area	NIA sq ft	sq m	IPMS 3 sq ft	sq m
Second Floor	20,347	1,890.3	20,892	1,940.9
Total Area	68,065	6,323.5	69,756	6,480.5



Floor Area	NIA sq ft	sq m	IPMS 3 sq ft	sq m
Third Floor	7,163	665.5	7,426	689.9
Total Area	68,065	6,323.5	69,756	6,480.5

